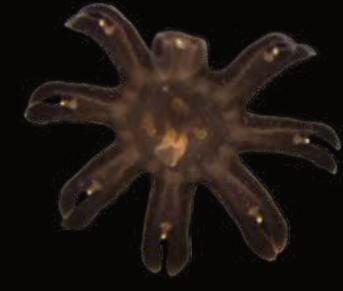
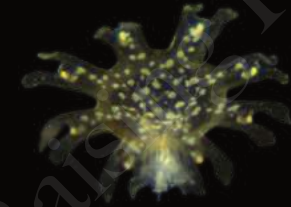
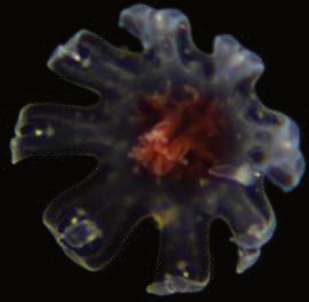


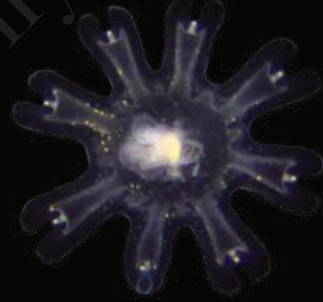
A Guide to Jellyfish Ephyra of the World



Aurelia coerulea



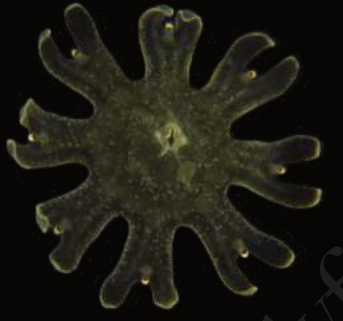
Rhopilema verrilli



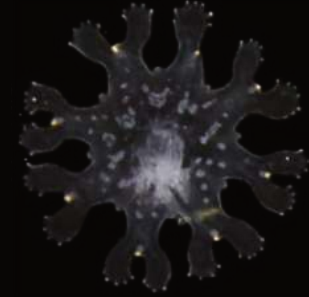
Cotylorhiza tuberculata



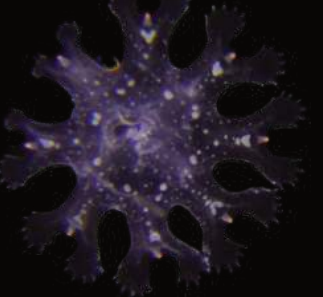
Chrysaora hysoscella



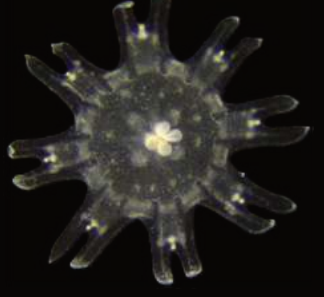
Aurelia malayensis



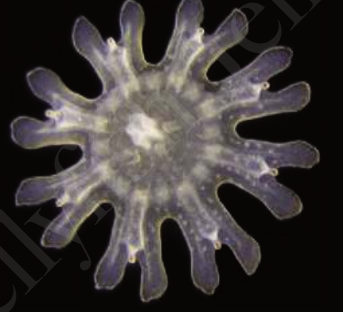
Rhopilema esculentum



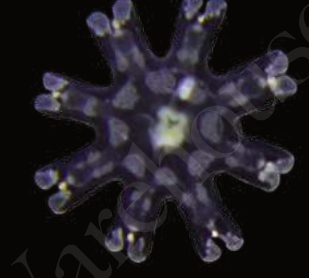
Lychnorhiza lucerna



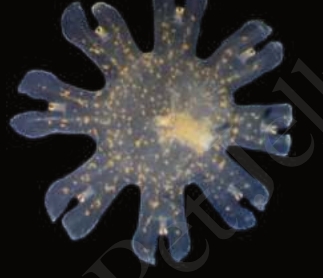
Chrysaora chesapeakei



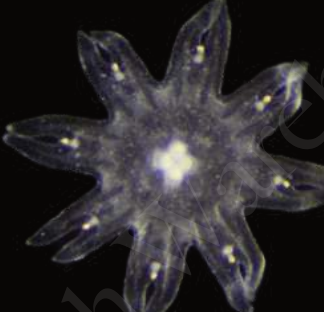
Aurelia sp.



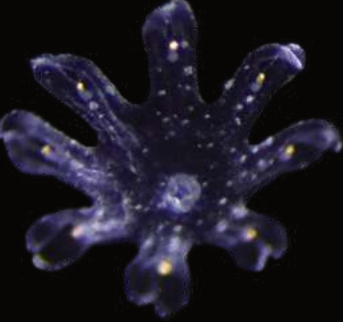
Rhopilema asamushi



Mastigias papua



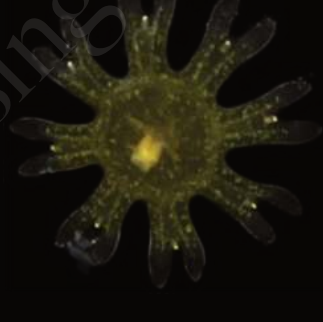
Chrysaora lactea



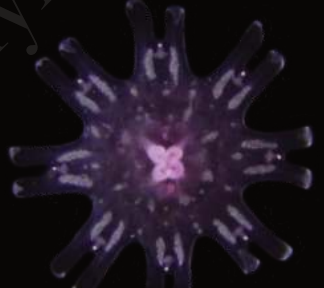
Aurelia marginalis



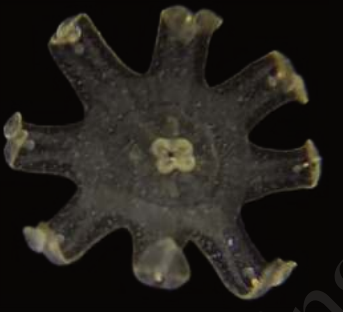
Rhizostoma pulmo



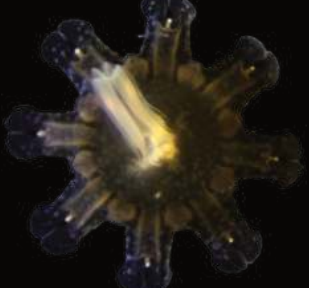
Phyllorhiza punctata



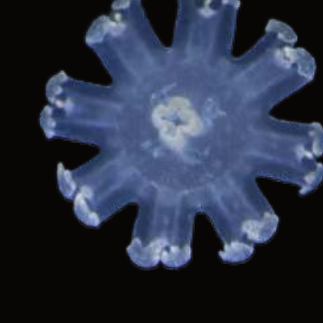
Chrysaora plocamia



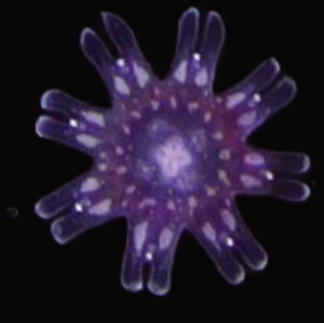
Aurelia limbata



Rhizostoma luteum



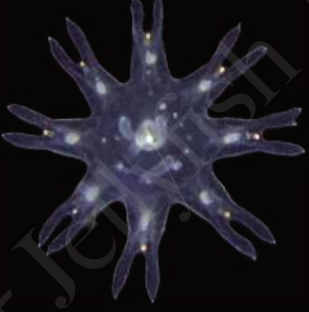
Catostylus mosaicus



Chrysaora achlyos



Cyanea versicolor



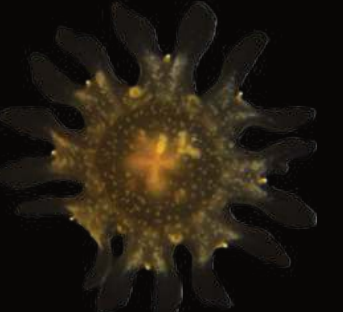
Stomolophus meleagris



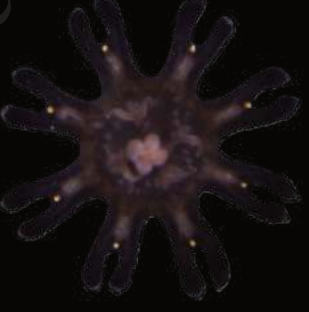
Catostylus townsendi



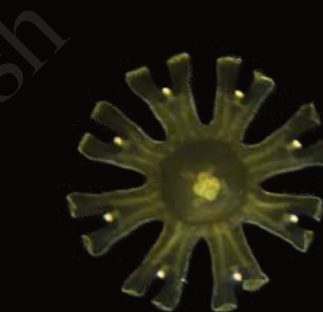
Chrysaora colorata



Cyanea fulva



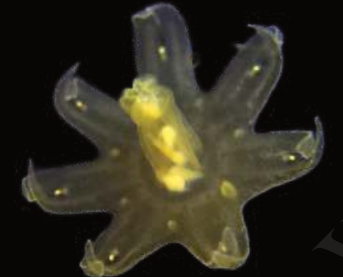
Stomolophus Sp.



Cephea cephea



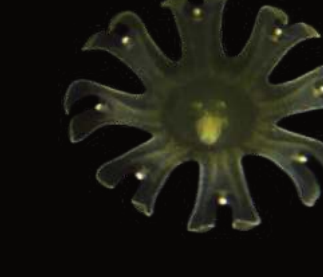
Chrysaora pacifica



Cyanea capillata



Sanderia malayensis



Netrostoma setouchianum



Chrysaora melanaster